

SHARP®

MFP PERFORMANCE ANYWHERE YOU NEED IT



MX-C312



THE RENAISSANCE OF COLOR



POWERFUL PERFORMANCE
IN A COMPACT HYBRID DESIGN

powerful



A flexible design for setup in countertop or floor-standing console configurations, expandable to 4-tray console with a maximum paper capacity of 2,100 sheets.

Sharp combines the **SIMPLICITY AND CONVENIENCE** of network printers with the **MULTI-TASKING PRODUCTIVITY** of color MFPs to achieve the best of both worlds.

The MX-C312 is an exciting examples of the **SHARP® FRONTIER SERIES**, bringing brilliant color output closer to your workgroup with a **HYBRID DESIGN** that has a small footprint to fit into environments others won't, yet isn't small on functionality.

The **7" (DIAGONAL) COLOR TOUCH-SCREEN** simplifies operation by providing an intuitive user interface to keep ahead of today's fast-paced office document distribution needs. With Sharp's **COMMON CONTROLLER ARCHITECTURE**, the Frontier Series provides uniform functionality and operability as found in Sharp's **AWARD-WINNING MFP PRODUCT LINE**. Engineered to help reduce operating costs and downtime, the MX-C312 is easier than ever to set up, monitor, and maintain and offers modular expandability, remote-access capabilities, and a **VALUE-ADDED APPROACH** to network and software integration. The latest in a long line of innovative Multifunction Document Systems, the MX-C312 incorporates Sharp's **AWARD-WINNING Sharp OSA® DEVELOPMENT PLATFORM** and industry-leading security suite to help protect data and control access. In action, their ease and versatility will change your mind about MFPs. More power, less complexity...that's **WORK WITHOUT LIMITS**.

PRODUCTIVITY IN ACTION TO SPEED OUTPUT AND STREAMLINE DOCUMENT WORKFLOW

The Sharp MX-C312 brings fast output,
superior color quality and compact

footprint closer to the workgroup.

Advanced and easy to operate features
will help maximize efficiency, simplify

- Vivid color and crisp black-and-white documents can be quickly and accurately produced at speeds up to **31** pages per minute.
- Powerful 800 MHz controller for **true multi-tasking** performance and increased multi-functional productivity.
- Large **7" (diagonal) high resolution, wide-screen color touch display** with an intuitive graphical user interface that makes advanced copying, printing, scanning and faxing functions easy to use.
- Sharp's powerful **ImageSEND™** technology securely scans documents to up to seven destinations, including USB devices, network folders, e-mail, fax machines and desktop PCs, at speeds up to 35 images per minute. You get one-touch distribution features that centralize document workflow helping save time and money.
- Third-generation Sharp OSA development platform enables users to **access network applications** directly from the device's touch-panel display, helping to **reduce redundancy and streamline workflow**.

work flow

document workflow and reduce
operating expense. Incorporating Sharp's
next-generation common controller
architecture, this powerful multi-tasking
MFP meets the fast-paced needs of today's
modern office.



- **Optional Inner Finisher** can be added without taking up much additional space. The space-efficient finisher not only provides exceptional productivity but also automates time-consuming tasks such as stapling, sorting and offset stacking.
- **Direct USB Scanning and Printing** provides a whole new level of convenience. It comes in handy for scanning documents directly to a USB memory device and is an easy way to print PDF documents.
- Sharp's easy-to-use Document Filing System provides a high-capacity 50 GB of hard drive space for **fast document storage and retrieval**, with **thumbnail view and image preview modes** that allow users to easily locate, identify and retrieve files.
- The **Remote Front Panel** feature allows administrators and help desk professionals to access and control the device from a remote PC workstation. This feature can also be used to help facilitate key operator training.
- The optional **Super G3 Fax Kit** with intelligent Inbound Fax Routing delivers lightning-fast faxing for busy workgroups.
- With **Sharpdesk® personal document management software**, users can easily organize their scanned documents and integrate them into everyday workflow.

- The optional **Business Card Feeder** can automatically feed and scan business cards and is capable of working with commercially available business card scanning software to automate contact database entry.



Optional business card feeder.



Front Panel USB 2.0 port for easy access.

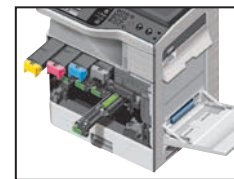
USER-FRIENDLY, ECO-FRIENDLY OPERATION TO HELP SPEED WORK, PROLONG LIFE AND REDUCE COST



The Sharp MX-C312 is designed to minimize service requirements and maximize uptime. The MX-C312 employs long-life, quick-replace cartridges to help extend supplies replenishment intervals and dramatically reduce downtime. Maintenance is trouble-free, with clean and simple replacement of supplies and machine maintenance procedures that can be performed quickly and easily by service technicians or help desk professionals.

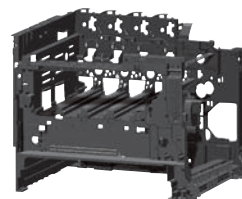
- By utilizing a long-life **tri-component supplies** system consisting of individual toner, developer and drum cartridges, the working life of developer and drums is significantly prolonged—and consumables yield can be up to **six times higher** than that of typical mono-unit consumable systems.
- Sharp encourages customers to make use of the **Toner Recycling Program** that provides a pre-paid shipping label for returning used **Sharp** toner cartridges to our recycling facility. Learn more at: www.sharppusa.com/recycle.
- Supplies can be replenished with **no mess and no tools required**. Maintenance parts such as primary transfer belt, transfer roller, fuser, paper feed rollers and document feed rollers are also designed for quick, tool-free replacement.
- Power consumption on the MX-C312 is among the lowest in its class. These models comply with the Energy Star™ Program and the RoHS program to minimize energy consumption and the use of chemicals and materials that can harm the environment.
- Built on a sophisticated and **rugged unibody frame**, the MX-C312 is constructed to absorb vibration, reduce operating noise, and consistently produce superior image quality.
- Sharp's **second-generation micro-fine toner technology** and new developer combine to reduce graininess, produce clear reproduction of fine lines and halftone colors, and offer a lower consumption rate than conventional toner. The result is breathtaking image quality, less packaging materials and longer replacement intervals.

- As a testament to our commitment to the environment, Sharp is a three-time winner of the ENERGY STAR annual Excellence in Energy Proficiency Product Design. Sharp is also a four-time winner of the SmartWay® Excellence Award, which recognizes companies for conserving energy and lowering greenhouse gas emissions in logistics and transportation. Sharp was also a previous recipient of the Excellence in Partnership Green Contractor Award and the Evergreen Award from the General Services Administration (GSA) and the Coalition for Government Procurement. These awards recognize environmentally responsible businesses and their efforts on recycling, waste reduction and affirmative procurement practices.



Quick Replace Cartridges for Easy Maintenance

This design makes service and general maintenance easier without the need to disassemble the entire machine.



Highly-Rigid Main Frame

Helps better protect and isolate critical machine components.



PERSONALIZED AND VERSATILE
APPLICATION INTEGRATION

versatile



Sharp OSA® technology at a glance

- Automate tasks and save time with seamless integration between the MX-C312 and network applications
- Centralized applications minimize set-up and installation on multiple Sharp products
- Virtually eliminates repetitive tasks and streamlines workflow, increasing efficiency
- Maximize your return on investment with tighter integration among IT assets
- Industry standard programming leads to faster deployment of new solutions



Today's multifunction products must be versatile enough to handle fast-changing system requirements and security demands. For Sharp, that's a given—but we've gone much further.

Designed for today's mobile and flexible workplace, the MX-C312 supports the

AWARD-WINNING SHARP OSA development platform. This **3RD GENERATION**

TECHNOLOGY delivers unparalleled efficiency, control and convenience. With **SEAMLESS**

INTEGRATION, Sharp OSA-developed applications provide a window into your business

applications, so you can access what you need, when you need it, right from the touch panel.

With the ability to **PERSONALIZE APPLICATIONS** and processes specific to your business,

Sharp OSA technology can help eliminate redundancy and streamline workflow. Utilizing

INDUSTRY STANDARD NETWORK PROTOCOLS, such as **XML** and **SOAP**, Sharp OSA

technology allows these MFPs to communicate with many different applications. As your

integration and workflow needs change, count on Sharp's scalable technology to

help **KEEP YOU AHEAD.**

The exchange of digital documents in the 21st century creates new challenges for network security. Sharp has developed an award-winning, multi-layered security system to help protect valuable

PROVEN PROTECTION FOR CONFIDENTIAL DATA, DEVICE ACCESS AND NETWORK SAFEGUARDS



Authority Group and Access Control

Advanced account management enables administrators to set authority groups for access to features of the MX-C312. Administrators can control which department, for instance, has full access to color copying, printing, scanning and/or fax. Walk up users enter a code, Local Name and Password, or LDAP User Authentication to access their features assigned to their group. Users can also login utilizing a human interface device (HID) such as a Smartcard or Common Access Card (CAC).*



Documents Remain Confidential

To help protect your printed documents from unauthorized viewing, the MX-C312 offers encrypted PDF files for printing and scanning as well as **Confidential Printing** that requires users to enter a PIN code in order to print a queued document. Additionally, **Secure Fax Release** ensures received fax documents are held in memory until an authorized user enters a PIN code. So compliance with healthcare regulations such as HIPAA is easier.



information and maintain employee confidentiality. No company has more experience in maintaining digital security—so corporate end-users and IT professionals can count on the proven safeguards of the MX-C312.



Data Erase and Encryption

To help protect your data, the MX-C312 Series offers an optional data security kit that encrypts document data using **AES** (Advanced Encryption Standard) **encryption**. Additionally, the data security kit erases the temporary memory on the hard drive by overwriting the encrypted data up to seven times, offering an unprecedented level of assurance.



Control Device Access Over the Network

To help restrict access to the device over the network, the MX-C312 offers IPsec, SMB and extended support for **SSL Encryption** (Secure Sockets Layer), **IP/MAC address filtering**, IEEE 802.1x authentication, protocol enable/disable and port management for maximum security.



Network Scanning Access

To help protect your network from unauthorized E-mail communications, the MX-C312 supports **User Authentication**, requiring users to login before performing any network scanning operations.



Tracking and Auditing Information

Legislation and industry policies require companies to be more aware of information flow from their offices. Sharp offers both built-in and additional hardware/software which allows users to control, access and track usage of each device on the network.

DATA  SECURITY

These scalable security offerings aim to protect your intellectual property, preserve confidential information and help your business to meet regulatory requirements, such as the Health Insurance Portability and Accountability Act (HIPAA), and the Gramm-Leach-Bliley Act (GLB). For additional information visit: www.sharpusa.com/security

* Some features require optional equipment.

DEVICE MANAGEMENT MAXIMIZES PRODUCTIVITY AND CONTROL



SHARP

The Sharp 24/7 Training Advantage
To make managing your new MX-C312 document systems simple and easy, ask your local Authorized Sharp Dealer about My Sharp, a dedicated customer-care website that offers solutions, resources and information specific to your new Sharp product.

Sharp's MX-C312 combines integrated, user-friendly software with robust device

management technology to help IT professionals manage usage, control costs and minimize

downtime. To maximize opportunities while reducing document and support costs, office

environments must **MANAGE DOCUMENT WORKFLOW** with greater intelligence. The Sharp

ADMINISTRATION UTILITY SUITE is designed to do just that. It allows administrators to

MANAGE DEVICES more efficiently. They can remotely manage the set-up, configuration,

device settings and more! The convenience of an Embedded Web Page gives users advanced

WEB-BASED MANAGEMENT TOOL of network scanning, profiles and web-links—while

manage

administrators can access device settings, color controls, account information and security

settings to help **SAVE TIME** and **IMPROVE PRODUCTIVITY**. Sharp's device management system

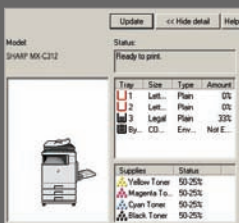
lets you **TAKE CHARGE** of color usage and costs. A new **REMOTE FRONT PANEL** feature allows

help desk professionals and support personnel to view and control the device's LCD Panel remotely

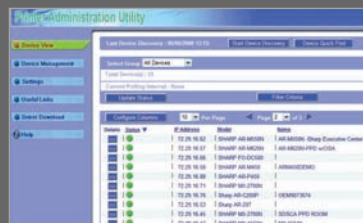
from any authorized networked PC. Our Printer Status Monitor lets network users **VIEW PRINTER**

CONDITIONS, check paper and toner levels right from the workstation. Powerful and intuitive

SHARPDESK® SOFTWARE enables individuals **GREATER CONTROL OF SCANNED DOCUMENTS**.



Printer Status Monitor



Printer Administration Utility



Embedded Web Page



Remote Front Panel

MX-C312 SPECIFICATIONS

Main Specifications

| | |
|----------------------|---|
| MX-C312 | Includes multi-tasking controller, 80 GB HDD with document filing system, PCL®5c/PostScript® 3 network printing, network scanning, 50-sheet RSPF, auto-duplex, 500-sheet paper drawers and 100-sheet bypass. Black and color developer is included in the box. |
| Type | Color multi-function digital document system |
| Functions | Copy, print, network print, network scan, document filing and fax¹ |
| Copy System | Dry electrostatic transfer/Dual component developer/Magnetic brush development/OPC drums/Heat Roller fusing/Xenon Lamp Exposure |
| Originals | Sheets and Bound Documents |
| Max Original Size | 8-1/2" x 14" |
| Copy Size | Min 5-1/2" x 8-1/2"/Max 8-1/2" x 14" |
| Copy Speed | 31 ppm B&W/Color (Letter) |
| Multiple Copy | Max: 999 copies |
| First Copy Time | Platen glass: 8.0 sec or less (B&W); 8.9 sec or less (color) RSPF: 9.9 sec or less (B&W); 11.5 sec or less (color)* |
| Warm-Up Time | 90 seconds or less* |
| Magnification | 50% to 200% in 1% increments (50 to 200% for RSPF) |
| Original Feed | 50-sheet RSPF with original size detection |
| Scan Speed | Copy mode (Simplex): Up to 35 ipm (B&W or color) @ 600 X 300 dpi. Network Scan (Simplex): Up to 35 ipm (B&W or color) @ 200 x 200 dpi. |
| Original Sizes | 5-1/2 x 8-1/2 / 8-1/2 x 14 (15-lb bond to 110-lb index) |
| Paper Feed System | Standard: 500 sheet paper drawer (Letter/Legal) and 100-sheet bypass tray (Letter/Legal). Optional: Up to 3 additional 500-sheet paper drawers (Letter/Legal)² |
| Paper Types | Paper drawers: 16-28 lb. bond. Other paper types include: plain, pre-printed, recycled, pre-punched, letterhead, and color paper. Bypass Tray: 16-28 lb. bond (plain paper), 15-16 lb. (thin paper), 28 lb. bond-110 lb. index (heavy paper), 20-24 lb. (Monarch/Com-10 envelope). Other types include label paper, gloss paper, pre-printed, recycled, pre-punched, letterhead, color film and OHP Film. |
| Duplexing | Standard automatic duplex copying and printing |
| CPU | Power QUICCII-MPC8533E/800MHz |
| Interface | RJ-45 Ethernet (10Base-T/100Base-TX/1000Base-T), USB 2.0 (Host Port), USB 2.0 (Device Port) |
| Memory | Standard 1 GB (copier); 512 MB (printer/network scanning) memory |
| Hard Disk Drive | 80 GB; up to 50 GB document filing system |
| Copy Resolution | Scan: B&W/Color: 600 dpi; Copy output: B&W/Color 600 dpi |
| Color Modes | Auto Color Control, Full Color Mode, Monochrome (B&W), 2 Color Mode, Single Color Mode. |
| Exposure Control | Modes: Automatic (Color: Magical View, B&W: Character AE) Text, Text/Photo, Text/Printed-Photo, Printed-Photo, Photo, Map, Pale-Color document. Settings: Auto exposure control or 9 step manual exposure. |
| Halftone | 256 gradations/2 levels (monochrome) |
| Copy Features | Scan-Once-Print-Many, electronic sorting, Auto Color Sensing (ACS), Auto Paper Sensing (APS), Auto Magnification Sensing (AMS), Auto tray switching (ATS), rotation copy, reverse copy, margin shift, edge erase, OHP insertion, card shot, reverse image, black-white reversal, centering, proof copy, 2-in-1, photo repeat, document filing, job programs, date/character/page stamp (color) |
| Account Control | Up to 1000 users. Supports user-number authentication (on device), login name/management, date/character/page stamp (color), Copy, Print, Scan, Fax and Document Management |
| Output Tray Capacity | Main output tray (top) 250 sheets (face down) |
| Firmware Management | Flash ROM with local (USB); network update capability and firmware update 1 to N with PAU (Printer Administration Utility) |
| Configuration Method | Web-based management system with user/administrator level login security, cloning (1 to N) with PAU and remote front panel access |
| Service/Maintenance | Remote Front Panel Access to service logs and click counts |
| Power | AC 100-127VAC, 60HZ, 12 AMPS |
| Power Consumption | Maximum: 1.44kW or less. |
| Weight | Approx. 102 lbs (base model) |
| Dimensions | 22-3/64" x 17-1/4" x 28-7/64" |

Network Printing System (Standard)

| | |
|--------------------|--|
| PDL | PCL5c, PCL6, PostScript 3 compatible, optional XPS |
| Resolution | 1200 dpi, 600 dpi |
| Print Speed | 31 pages per minute (Letter) |
| Print Drivers | Windows® Server® 2003-2008, Windows® XP, Windows XP x 64, Windows® Server x64, Windows Vista®, Windows Vista® x 64, Windows® 7, MAC, OSX (including 10.4.11, 10.5-10.5.8, 10.6-10.6.8, 10.7-10.7.2), all MAC PPD. |
| Features | Continuous printing, duplex printing, pamphlet printing, N-up printing, image rotation, different cover page/last page, transparency inserts, carbon copy print mode, fit-to-page, poster print, margin shift, mirror image, watermarks, overlay, confidential print, confidential batch print, print hold, bypass printing, job priority printing and direct printing. (Note: Some features not available on certain print drivers) |
| Direct Printing | File Types: TIFF, JPEG, PCL, PRN, TXT, PDF, Encrypted PDF, Postscript and XPS¹. Methods: FTP, WebPage, E-mail and USB Memory |
| Resident Fonts | 80 Outline Fonts |
| Interface | RJ-45 Ethernet 10Base-T/100Base-TX/1000Base-T |
| Operating Systems | Windows® Server® 2003-2008, Windows® 2000/XP, Windows Vista, Windows 7, MAC OSX 10.4.11, 10.5-10.5.8, 10.6-10.6.5, 10.6.8, 10.7-10.7.2, Novell® Netware® 3x, 4x, 5x, Sun® OS 4.1x, Solaris® 2x, Unix®, Linux® and Citrix® (Metaframe, Presentation Server 4, 4.5) and Windows Terminal Services. |
| Network Protocols | TCP/IP (IPv4, IPv6, IPSEC) SSL (HTTP, IPP, FTP), SNMPv3, 802.1x for Windows and Unix. LPD and LPR for UNIX. IPX/SPX® for Novell environments. EtherTalk® and NetBEUI, AppleTalk® for Macintosh® environments. |
| Printing Protocols | LPR, IPP, IPPS, PAP, Raw TCP (port 9100), FTP and Novell Pserver/Rprinter |
| Network Security | IP/Mac address filtering, protocol filtering, port management, user authentication and document administration. |
| Security Standards | IEEE 2600-2008, DoD (NSTISSP) #11, DoD Directive 8500.2, DoD (DISA) |

Network Scanning System (Standard)

| | |
|---------------------------|---|
| Max Original Size | 8-1/2" x 14" |
| Optical Resolution | 600 dpi |
| Output Modes | 600 dpi, 400 dpi, 300 dpi, 200 dpi, 100 dpi |
| Scan Modes | Color, monochrome, grayscale |
| Image Formats | Monochrome: TIFF, PDF, Encrypted PDF, XPS¹ Color: Grayscale, Color TIFF, JPEG, PDF, Encrypted PDF, XPS¹ Internet Fax: TIFF-FX, FIFF-F, TIFF-S¹ |
| Image Compression | Monochrome Scanning: Uncompressed, G3 (MH), G4 (MR/MMR) Color/Grayscale: JPEG (High, middle, low) Internet Fax mode: MH/MMR (option) |
| Scan Destinations | E-mail, Desktop, FTP, Folder (SMB), USB, Internet fax (option), Super G3 fax (option) |
| One-Touch Destinations | Up to 999 (combined scan destinations) |
| Group Destinations | Up to 500 |
| Programs | 48 (combined) |
| Max. Jobs in Memory | Up to 94 |
| Network Protocols | TCP/IP and SSL (Includes HTTP, SMTP, LDAP, FTP, POP3), SMB, ESMTMP and 802.1x |
| Network Security Software | E-mail server user authentication for LDAP and Active Directory Sharpdesk® desktop document management software (1 user license) |

B&W Super G3 Fax Kit (Option)

| | |
|-------------------------|---|
| Transmission Mode | Super G3, G3 |
| Modem Speed | 33.6 KBPS³ |
| Compression | JBIG, MMR, MR, MH |
| Methods | |
| Scanning Method | Sheet fed simplex or duplex or book |
| Max Transmit Resolution | 400 dpi |
| Transmit Speed | Approximately 2 seconds with Super G3/JBIG⁴ |
| Auto Dialing | Up to 999 (combined scan destinations) |
| Group Dial/Destinations | Up to 500 |
| Inbound Fax Routing | Forwards received fax data to E-mail, FTP, Desktop, SMB |

B&W Super G3 Fax Kit - Continued

| | |
|-----------------------|---|
| Long Length Originals | Up to 19.5" (for transmission) |
| Programs | 48 (combined) |
| Memory | 8 MB (Exclusive) |
| Halftone | 256 levels |
| Features | Quick on-line transmission, direct transmission, F-Code transmission/reception, rotate transmission, anti-junk fax reception, automatically staple received faxes, secure fax release, out of paper memory reception, auto redial, duplex reception transaction reports, activity reports and PC Fax. |

Inner Finisher (Option)

| | |
|------------------------------------|--|
| Type | Build in Finisher |
| Output Capacity | Up to 280 sheets (Letter/Legal), 100 postcard, 20 envelope |
| Output Delivery | Face down |
| Stapling Media | Plain/Thin/Heavy/Recycled/Letterhead/Pre-punched/Colored/Preprinted paper |
| Stapling Positions | Single corner position |
| Power Source | Supplied from the main unit |
| Stapling | 30 sheets Letter/legal |
| Stapled Sets | 10 bundles or 300 sheets (letter/legal) |
| Weight | Approx. 19.8 lbs |
| Dimensions (When Tray is expanded) | 18-2/3" (w) x 13-1/16" (d) x 6-3/16" (h) 20-1/2" (w) x 13-1/16" (d) x 6-3/16" (h) |

Optional Equipment

| | |
|--------------|--|
| MX-FN12 | Inner Finisher |
| MX-CFABB | Base Plate with locking casters |
| MX-CFABD | Deluxe Cabinet with door and locking casters |
| MX-CSX1 | 500 sheet Paper Feed Unit for Tray 2 |
| MX-CSX2 | 500 sheet Paper Feed Unit for Trays 3 & 4 |
| MX-PUX1 | XPS Expansion Kit (Requires MX-SHP1GBXPS) |
| MX-SHP1GBXPS | Expansion Memory 1 GB (Required for MX-PUX1) |
| AR-PF1 | Bar Code Font Kit |
| MX-FR29U | Commercial Data Security Kit |
| MX-FXX3 | Fax Expansion Kit |
| MX-FWX1 | Internet Fax Expansion Kit |
| MX-AMX1 | Application Integration Module |
| MX-AMX2 | Application Communication Module |
| MX-AMX3 | External Accounting Module |
| MX-USX1 | Sharpdesk 1 License Kit |
| MX-USX5 | Sharpdesk 5 License Kit |
| MX-US10 | Sharpdesk 10 License Kit |
| MX-US50 | Sharpdesk 50 License Kit |
| MX-USA0 | Sharpdesk 100 License Kit |
| MX-BTX1 | Business Card Feeder |

Supplies

| | |
|-----------|-------------------------|
| MX-C40NTB | Black Toner Cartridge |
| MX-C40NTC | Cyan Toner Cartridge |
| MX-C40NTM | Magenta Toner Cartridge |
| MX-C40NTY | Yellow Toner Cartridge |
| MX-C40NVB | Black Developer |
| MX-C40NVC | Cyan Developer |
| MX-C40NVM | Magenta Developer |
| MX-C40NVY | Yellow Developer |
| MX-C40NRB | Black Drum Cartridge |
| MX-C40NRS | Color Drum Cartridge |

* May vary depending on product configuration, machine settings and operating and/or environmental conditions.

¹ Some features require optional equipment

² Paper capacity is based on letter size paper

³ Actual transmission time will vary based on line conditions

⁴ Based on Sharp Standard Test Chart with approximately 700 characters, letter size in standard resolution



SHARP®

SHARP ELECTRONICS CORPORATION
Sharp Plaza, Mahwah, NJ 07495-1163
1-800-BE-SHARP • www.sharppusa.com

Design and specifications subject to change without notice. Sharp, Sharp OSA, Sharpdesk, My Sharp, and all related trademarks are trademarks or registered trademarks of Sharp Corporation and/or its affiliated companies. Windows, Windows NT, Windows Server and Windows Vista are trademarks or registered trademarks of Microsoft Corporation. All other trademarks are the property of their respective owners.

